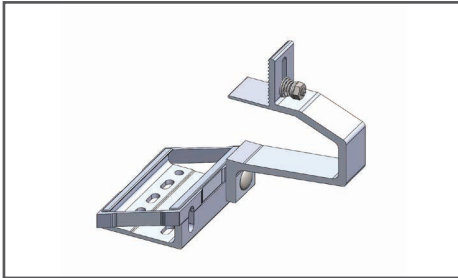


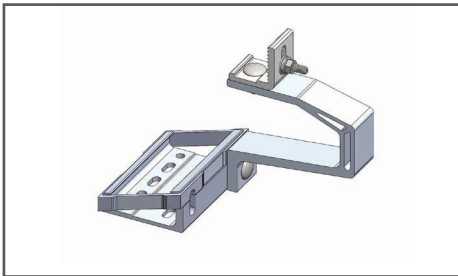
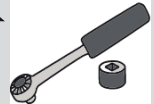
Montage

Montage der Profile



Dachhaken AI6-AW aufklappen und **Mutter M10 fest anziehen.**

M10: 32 Nm

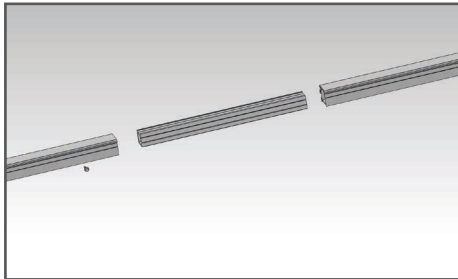


Dachhaken AI8 aufklappen und Mutter M10 fest anziehen.

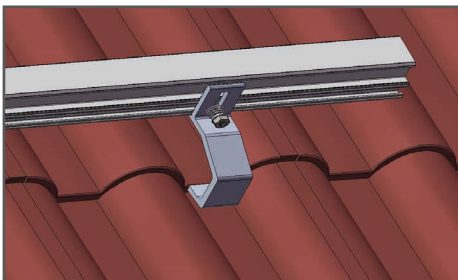
Adapterwinkel auf Dachhaken schrauben.

Mutter M10 fest anziehen.

M10: 32 Nm



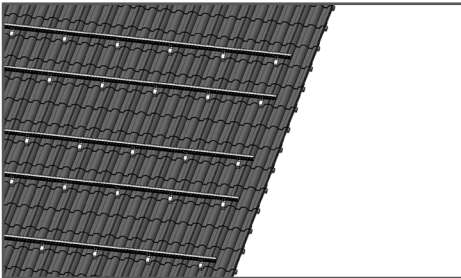
Profile verbinden.



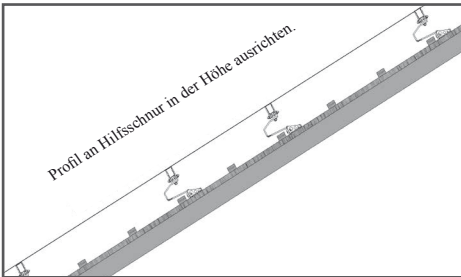
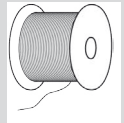
Trageschiene am Dachhaken/Adapterwinkel montieren.

Noch nicht fest verschrauben, da sonst die Ausrichtung der Schienen nicht mehr möglich ist.

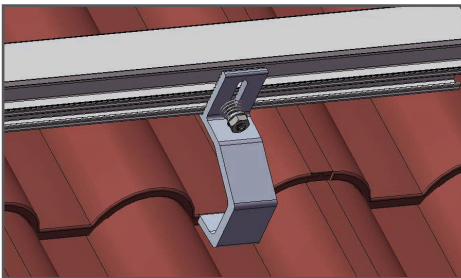
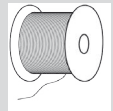
Montage



Profile parallel ausrichten.

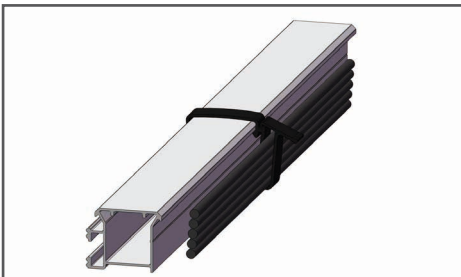
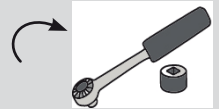


Höhe der Profile über Verstellen der Adapterwinkel ausrichten.



Alle Schrauben am Dachhaken/Adapterwinkel festziehen.

M8: 16 Nm



Stringleitungen verlegen.
(Zur Vorbereitung der Modulmontage.)